



Vlaanderen
is omgeving

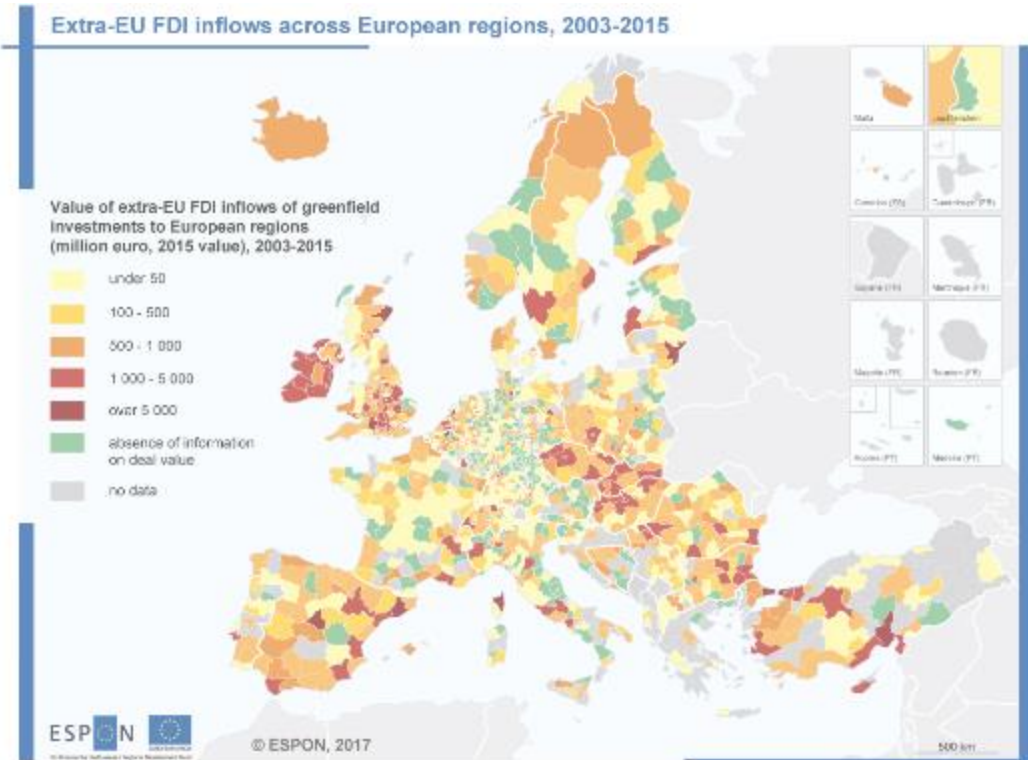
ESPON 2020 Cooperation Programme

Anneloes van Noordt
MC-member Belgium
Anneloes.vannoordt@vlaanderen.be

DEPARTEMENT
OMGEVING

Outline

- ▶ ESPON 2020 Cooperation Programme
- ▶ Applied Research
- ▶ Targeted Analysis
- ▶ Database & Tools
- ▶ Outreach



Vlaanderen
is omgeving

ESPON 2020 Cooperation Programme

- ▶ ESPON 2020 Programme mission statement:

“Promoting and fostering a European territorial dimension in development and cooperation by providing, disseminating and promoting territorial evidence, knowledge transfer and policy learning to public authorities and other policy actors at all levels.”

- ▶ Strategic objective:

“Consolidate a European Territorial Observatory Network and grow the provision and policy use of pan-European, comparable, systematic and reliable territorial evidence”.

ESPON 2020 Cooperation Programme

To achieve the strategic objective and accomplish the mission 5 specific objectives have been defined:

1. Enhanced European territorial evidence production through applied research and analyses.
2. Upgraded knowledge transfer and use of analytical user support.
3. Improved territorial observation and tools for territorial analyses.
4. Wider outreach and uptake of territorial evidence.
5. Leaner, and more effective and efficient implementation provisions and more efficient programme assistance

Applied Research

Continued Production of Territorial Evidence through Applied Research and Analyses.

- ▶ Thematic and Cross-thematic on territorial structures and trends
- ▶ Prospective visions and scenarios
- ▶ Territorial impact studies of EU policies

- ▶ Target: 22 applied research projects
- ▶ Calls for tender and service contracts
- ▶ Implementation time envisaged max. 18 months
- ▶ Value: c. € 15.6 million

Applied Research

- ▶ **Employment:** Geography of new employment dynamics in Europe
- ▶ **Foreign Direct Investments** (World in Europe): The World in Europe, global FDI flows towards Europe
- ▶ **SMEs:** Small and Medium-sized Enterprises in European Regions and Cities
- ▶ **Low-carbon economy** (Locate): Territories and low-carbon economy
- ▶ **Inner peripheries:** National territories facing challenges of access to basic services of general interest
- ▶ **Territorial futures:** Possible European Territorial Futures
- ▶ **Territorial governance:** Comparative Analysis of Territorial Governance and Spatial Planning Systems in Europe

Applied Research

- ▶ **Financial instruments:** Territorial analysis on the impacts of European Structural and Investment Funds' financial instruments
- ▶ **Green infrastructure:** Enhancing biodiversity and ecosystem services for territorial development
- ▶ **Youth unemployment:** territorial trends and regional resilience
- ▶ **Bridges:** Territories with geographical specificities
- ▶ **Circular economy** and territorial consequences
- ▶ **Refugee flows:** Impacts on Territorial Development in Europe
- ▶ **European territorial reference framework**

Targeted Analyses

Upgraded Knowledge Transfer and Use of Analytical User Support.

- ▶ Targeted Analyses defined by stakeholders at national, regional and local level (interest driven)
- ▶ Territorial evidence support to ETC, other EU funded programmes and macro-regions (interest driven)
- ▶ Policy briefs/working papers, fast and timely (upon demand)

- ▶ Target: 25 Targeted Analyses & 45 policy briefs / working papers
- ▶ Calls for tender on analytical support to Targeted Analyses/Evidence Support and service contracts
- ▶ Value: € 6.4 million

Targeted Analyss

- ▶ **Regional strategy**, ReSSI – Regional strategies for sustainable and inclusive territorial development – Regional interplay and EU dialogue
- ▶ **Territorial Cooperation Areas**, ACTAREA – Thinking and Planning in Areas of Territorial Cooperation
- ▶ **Metropolitan areas**, SPIMA – Spatial dynamics and strategic planning in metropolitan areas
- ▶ **Protected areas**, LinkPas – Linking networks of protected areas to territorial development
- ▶ **Migration flows**, Territorial and Urban Potentials Connected to Migration and Refugee Flows
- ▶ **Macro-regional spatial planning**, BT2050 – Territorial Scenarios for the Baltic Sea Region

Targeted Analyses

- ▶ **Alps2050** – Common spatial perspectives for the Alpine Space. Towards a common vision.
- ▶ **Cross-border Public Services (CPS)**
- ▶ **Future Digital Health** in the EU
- ▶ **Cultural Heritage (CH)** as a strategic territorial development resource; mapping impacts through a set of common European socio-economic indicators.
- ▶ **Territorial Impact Assessment** for Cross-Border Cooperation (TIA CBC)
- ▶ **Maritime spatial planning** and land-sea interactions
- ▶ **Potentials of big data** for integrated territorial policy development in the European growth corridors
- ▶ **Improving Urban-Rural connectivity** in non-metropolitan regions (URRUC)

Database & Tools

Improved Territorial Observation and Tools for Territorial Analyses.

- ▶ ESPON Database focusing on data update and user-friendliness
- ▶ European territorial monitoring system with custom-made macro-regional/transnational territorial monitoring systems (upon demand)
- ▶ European monitoring reports for policy development
- ▶ A revised ESPON Toolbox
- ▶ Promotion, user support related to tools (hotline, TIA, etc.)

- ▶ Target: 8 tools
- ▶ Calls for tender and service contracts
- ▶ Value: c.€ 3.5 million

Database & Tools

- ▶ **EU Territorial Review** - a synthesis of findings building on applied research undertaken up to summer 2017
- ▶ **TIA Tool** - an interactive web application that can be used to support regional policy makers and practitioners with identifying, ex-ante, potential territorial impacts of new EU Legislations, Policies and Directives
- ▶ **ESPON European and Macro-regional Territorial Monitoring Tool** - continuously observe the development trends and patterns taking place in Europe

Outreach

Wider Outreach and Uptake of Territorial Evidence.

- ▶ Outreach Strategy for European and Transnational outreach
 - ▶ ESPON events at European level focusing on target groups
 - ▶ Outreach at transnational and national level in cooperation with national ESPON Contact Points
-
- ▶ Target: 60 events and publications
 - ▶ Calls for tender and service contracts
 - ▶ Value: € 4.5 million

Outreach

- ▶ ESPON workshop “Understanding northern peripherality and devising strategies for intervention” 30 November, Oslo
- ▶ ESPON seminar ”Transforming territorial thinking through digitalisation“ 6-7 December, Tallinn
- ▶ ESPON Seminar in cooperation with the EU Presidency BG 30-31 May 2018, Sofia

- ▶ ESPON workshop “Regional Spatial Planning Strategies” March 2018, Paris
- ▶ ESPON workshop “Regional Spatial Planning Strategies” May 2018, Dublin
- ▶ ESPON workshop “Regional Spatial Planning Strategies” September 2018, Brussels



Vlaanderen
is omgeving

ESPON 2020 Cooperation Programme

Thank You

Anneloes van Noordt
MC-member Belgium
Anneloes.vannoordt@vlaanderen.be

DEPARTEMENT
OMGEVING