

ESPON



policy making by territorial evidence



ESPON calls and reports

# Context

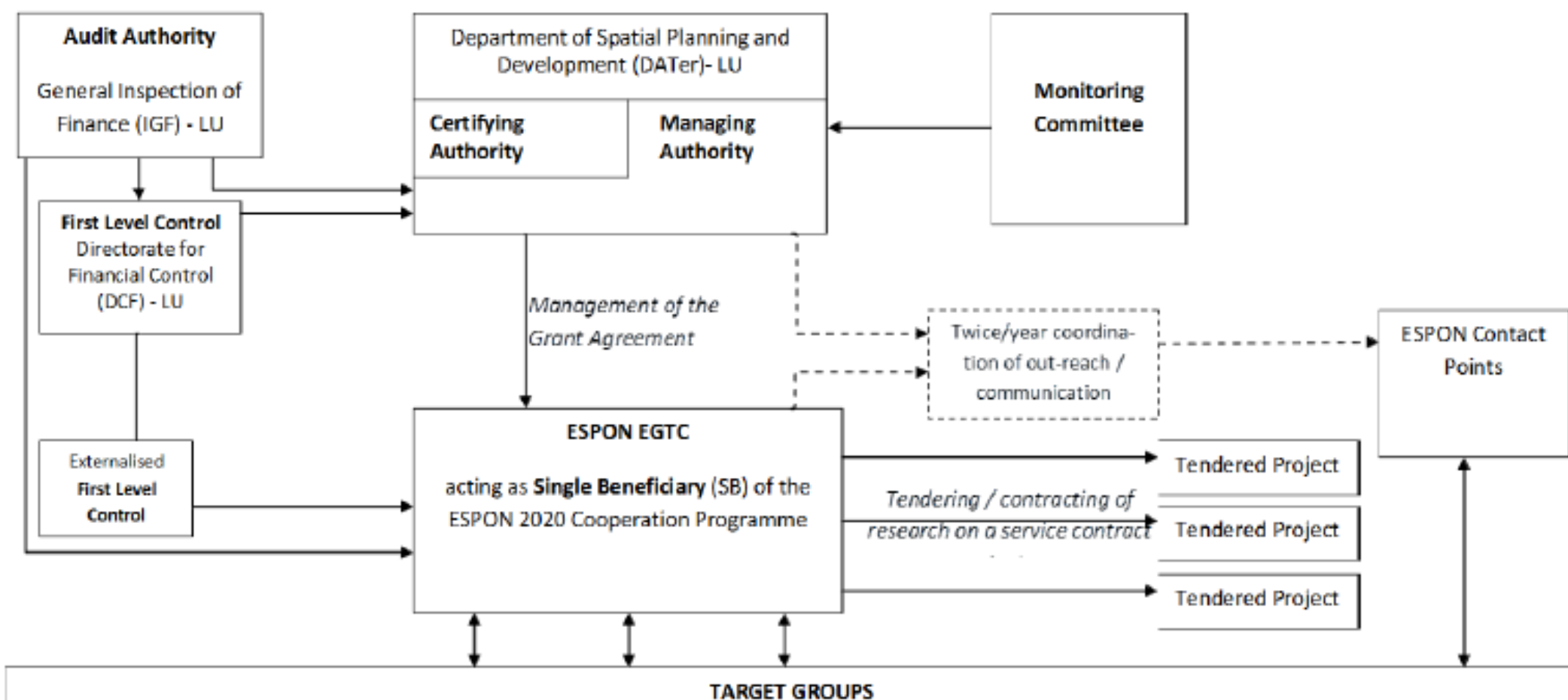
- Policy based on territorial facts
- Challenges of the economic crisis
- Social and environmental challenges
- Contribution to the Cohesion Policy 2014-2020
- Supporting the Territorial Agenda 2020

Additional information available [online](#)

# Cooperation Programme

- Priority Axis 1: Territorial Evidence, Transfer, Observation, Tools and Outreach
  - Budget around 48 mio. Euro
  - Implementation authority: The Single Beneficiary – the ESPON EGTC
  
- Priority Axis: Technical Assistance
  - Budget around 3 mio. Euro
  - Implementation authorities: the ESON Managing Authority, the Ministry of Sustainable Development and Infrastructures in Luxembourg

# Administrative set-up of ESPON 2020



# Targeted Analysis

- 2 cut-off dates per year (but submission all year long)
  - **Lead and partner stakeholders:** policymakers working at European, national, regional and local level as well as authorities implementing European Funding programmes, in particular, policy officers and practitioners from transnational, national, macroregional/regional and local authorities. Therefore, whatever the legal status of the structure/body is, the focus of the European Grouping for Territorial Cohesion (EGTC) is to target stakeholders with the capacity of implementing the outcome of the targeted analysis.
  - The purpose is still to make it possible for associations with no policy implementing power as such to participate in the TA via other means. They can support the lead stakeholder in coordinating the stakeholder group, participate in the **Steering Committee** and perform other functions as requested by the constituents of the association to ensure a successful implementation of the TA. The roles attributed to the associations have to be explained in the stakeholder proposal.
- **European partners sharing the same analytical needs**

# Targeted Analysis

- 7 selection criteria:
  1. Relevance of place-based development strategies
  2. Presence of a European perspective
  3. Relevance of existing ESPON evidence
  4. Realism in analytical terms
  5. Competent involvement of stakeholders
  6. Use of analytical results in policymaking
  7. Added value and transferability
- Guidance, forms and further details available [online](#)

# Targeted Analysis

- The Belgian ESPON Contact Point (BECP) can assist you in:
  - Creating a network of European partners;
  - Answering to the ESPON selection criteria.
- Dutch and French translations of the process are available in [June's newsletter](#)

# Belgian ESPON Contact Point (BCECP)

- Monitoring Committee



DEPARTEMENT  
RUIJITE VLAANDEREN



Vlaamse  
overheid



Wallonie



Service public  
de Wallonie

- Contact Point



- BECP secretariat: Chloé Walot

[chloe.walot@ugent.be](mailto:chloe.walot@ugent.be)

+32 9 331 32 56 (afternoon)

+479 23 78 53



# Tendered and ongoing projects

## Applied Research (AR)

- [Youth unemployment: territorial trends and regional resilience](#)
- [Territories with geographical specificities](#)
- [Impacts of refugee flows to territorial development in Europe](#)
- [Circular Economy and Territorial Consequences](#)
- [Financial Instruments and Territorial Cohesion](#)
- [Green infrastructure and ecosystem services](#)
- [The Geography of New Employment Dynamics in Europe](#)
- [The World in Europe, global FDI flows towards Europe](#)
- [Small and Medium-sized Enterprises in European Regions and Cities](#)
- [Territories and low-carbon economy](#)
- [Inner Peripheries: national territories facing challenges of access to basic services of general interest](#)
- [Possible European Territorial Futures](#)
- [Comparative Analysis of Territorial Governance and Spatial Planning Systems in Europe](#)

# Tendered and ongoing projects

## Targeted Analyses (TAs)

- [Territorial and Urban Potentials Connected to Migration and Refugee Flows](#)
- [Linking networks of protected areas to territorial development \(LinkPAs\)](#)
- [Territorial Scenarios for the Baltic Sea Region \(BT 2050\)](#)
- [Regional strategies for sustainable and inclusive territorial development \(ReSSI\) – Regional interplay and EU dialogue](#)
- [Spatial dynamics and strategic planning in metropolitan areas - SPIMA](#)
- [Thinking and planning in areas of territorial cooperation - TCA](#)

# Previous ESPON projects

- [ESPON 2013](#)
- [ESPON 2006](#)

# Upcoming calls

## AR

- European territorial reference framework towards 2050

## TAs

- Alps20150 – Common spatial perspectives for the Alpine Space. Towards a common vision
- Cross-border Public Service (CPS)
- Future Digital Health in the EU
- Cultural Heritage (CH) as a strategic territorial development resource: mapping impacts through a set of common European socio-economic indicators

# Upcoming service contracts

- European and macro-regional monitoring tools
- Functional urban areas and regions in Europe
- Monitoring real estate prices in European cities
- Territorial evidence support to EU funded programmes

# EGTC Vacancies

- [2 trainees \(5 months\)](#)

Deadline for application: 30 June

- [Financial Expert/Contract management and Financial Control](#)

Deadline for application: 12 July

ESPON



policy making by territorial evidence



# Territorial needs in Belgium?

Current needs?

Current developments?

Would an 'ESPON perspective' come in handy?